

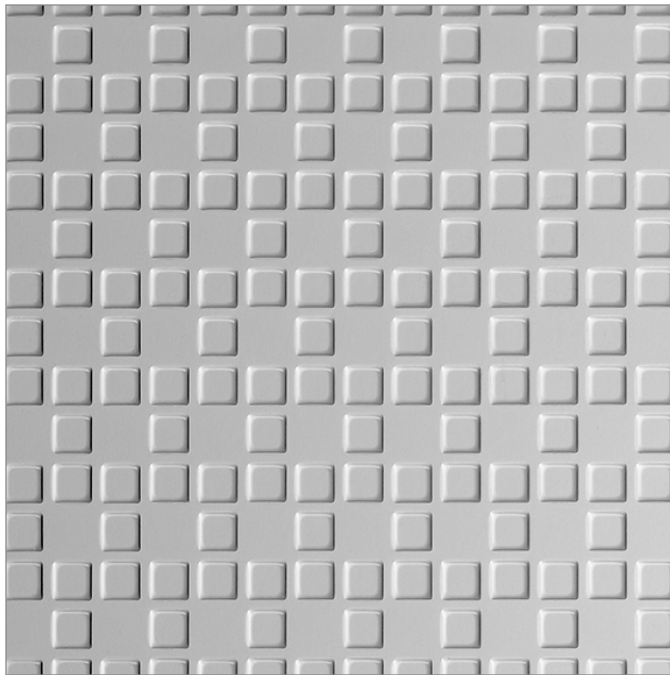
Décors | Impressions



Price Group: \$\$

PAT. US D814,051

Created by embossing resin with a perforated aluminum grid, this cousin of Metallic décor Pixel features a structured pattern that alludes to the design's technological influences.



PATTERN TO SCALE

Bit is only available with a gloss or matte finish on the textured side.

Impressions are embossed into clear resin. Add-ons and other finishes are only available on the non-textured side of this décor.

To see more images of this décor, visit the [Lumicor website](#).

**SUSTAINABLE FEATURE** | Panels featuring this décor contain a minimum of 50% recycled content.

*Not all decors are available in every gauge or sheet size and may vary by resin. Gauge tolerance is ± 15%. Each color layer adds .010" to the thickness. Colors may differ between the page and the product. For the most accurate color representation, please consult physical samples.*

## MATERIAL SPECIFICATIONS

### RESIN TYPES & SIZES

*Lumiclear gauges:*

- 1/8" .118 (3 mm)
- 1/4" .236" (6 mm)
- 3/8" .354" (9 mm)
- 1/2" .472" (12 mm)

*Panel sizes:*

- Standard | 46" x 96" (1168 x 2438 mm)

### DEFAULT FINISHES

Standard Finishes | Gloss Emboss/Matte

### COMPATIBLE ADD-ONS

- ChemShield
- Marker Board
- Illume
- Opaque
- Luminous
- Reflective Finishes

### DESIGN DETAILS

*Pattern Repeat*

Yes

*Decor Direction*

Vertical

### OPACITY

Based on approximate amount of light showing through the panel.

