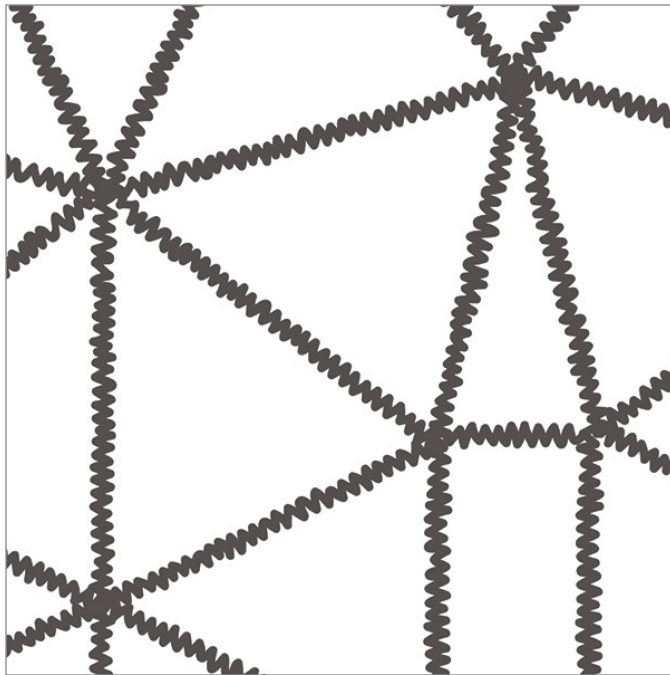


Décors | Print

Price Group: \$\$\$\$

RUE™

Handdrawn zigzags bounce across a transparent background in this playful, geometric pattern. The dark lines are slightly translucent, allowing for maximum light transmission.



PATTERN TO SCALE

To see more images of this décor, visit the [RUE™ gallery](#).

Not all decors are available in every gauge or sheet size and may vary by resin. Gauge tolerance is ± 10%. Each color layer adds .010" to the thickness. Colors may differ between the page and the product. For the most accurate color representation, please consult physical samples.

MATERIAL SPECIFICATIONS

RESIN TYPES & SIZES

Lumiclear gauges:

- 1/8" .118" (3 mm)
- 3/16" .196" (5 mm)
- 1/4" .236" (6 mm)
- 3/8" .354" (9 mm)
- 1/2" .472" (12 mm)
- 3/4" .708" (18 mm)
- 1" .944" (24 mm)

Lumiform gauges:

- 1/8" .118" (3 mm)
- 1/4" .236" (6 mm)
- 3/8" .354" (9 mm)
- 1/2" .472" (12 mm)

Lumishield EX gauges:

- 1/4" .236" (6 mm)
- 1/2" .472" (12 mm)

Panel sizes:

- Standard | 48" x 96" (1219 x 2438 mm)
- Oversize | 48" x 120" (1219 x 3048 mm)

DEFAULT FINISHES

Standard Finishes | Satin/Satin

Lumishield EX Finishes | Satin/Satin

COMPATIBLE ADD-ONS

- ChemShield
- Marker Board
- Illume
- Opaque
- Luminous
- Reflective Finishes

DESIGN DETAILS

Pattern Repeat

Yes

Decor Direction

Vertical

OPACITY

Based on approximate amount of light showing through the panel.

0% 25% 50% 75% 100%

