

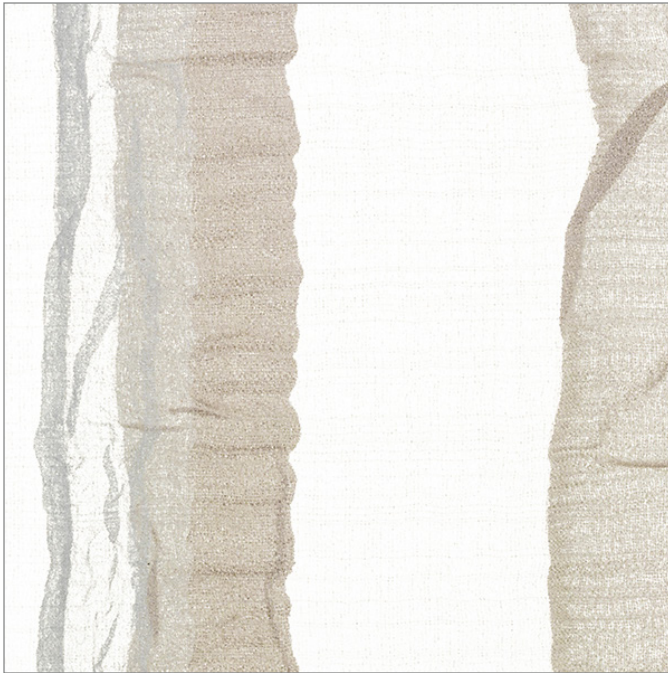
Décors | Textile

## NORI SAND™

**Price Group: \$\$\$**

*More colors available*

Vertical ribbons of color run along a soft gauze backer to diffuse light. Each ribbon's multi-layered strands organically wave and ripple into a sophisticated pattern.



PATTERN TO SCALE

To see more images of this décor, visit the [Lumicor website](#).

*Not all decors are available in every gauge or sheet size and may vary by resin. Gauge tolerance is ± 10%. Each color layer adds .010" to the thickness. Colors may differ between the page and the product. For the most accurate color representation, please consult physical samples.*

## MATERIAL SPECIFICATIONS

### RESIN TYPES & SIZES

*Lumiclear gauges:*

- 1/8" .118" (3 mm)
- 3/16" .196" (5 mm)
- 1/4" .236" (6 mm)
- 3/8" .354" (9 mm)
- 1/2" .472" (12 mm)
- 3/4" .708" (18 mm)
- 1" .944" (24 mm)

*Lumiform gauges:*

- 1/8" .118" (3 mm)
- 1/4" .236" (6 mm)
- 3/8" .354" (9 mm)
- 1/2" .472" (12 mm)

*Panel sizes:*

- Standard | 48" x 96" (1219 x 2438 mm)
- Oversize | 48" x 116" (1219 x 2946 mm)

### DEFAULT FINISHES

Standard Finishes | Satin/Satin

### COMPATIBLE ADD-ONS

- ChemShield
- Marker Board
- Illume
- Opaque
- Luminous
- Reflective Finishes

### DESIGN DETAILS

*Pattern Repeat*

No

*Décor Direction*

Horizontal/Vertical

### OPACITY

Based on approximate amount of light showing through the panel.

