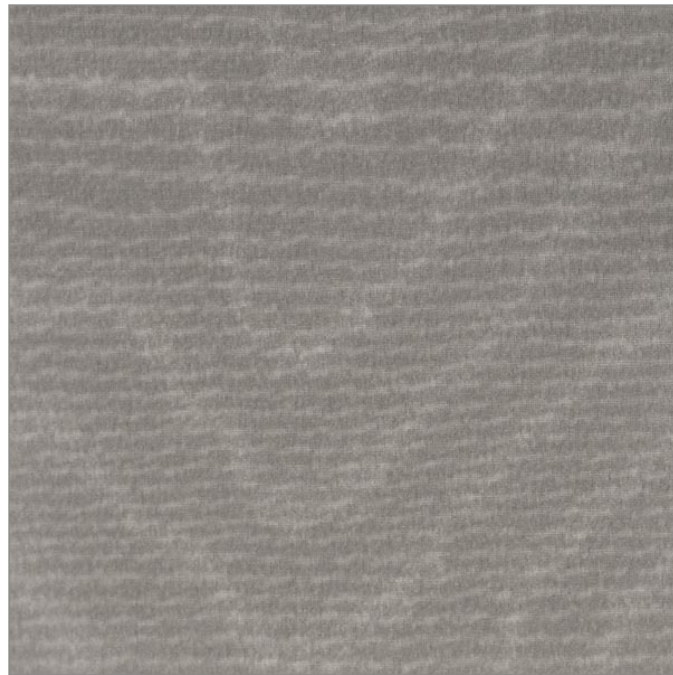


Décors | Textile

SLATE ICE™

Semi-sheer fabric with a subtle sheen creates a translucent diffusion effect in this more opaque version of Slate. Create a textured color statement with this versatile textile.



PATTERN TO SCALE

To see more images of this décor, visit the [Lumicor website](#).

Not all decors are available in every gauge or sheet size and may vary by resin. Gauge tolerance is ± 10%. Each color layer adds .010" to the thickness. Colors may differ between the page and the product. For the most accurate color representation, please consult physical samples.

Price Group: \$

More colors available

MATERIAL SPECIFICATIONS

RESIN TYPES & SIZES

Lumiclear gauges:

- 1/8" .118" (3 mm)
- 3/16" .196" (5 mm)
- 1/4" .236" (6 mm)
- 3/8" .354" (9 mm)
- 1/2" .472" (12 mm)
- 3/4" .708" (18 mm)
- 1" .944" (24 mm)

Lumiform gauges:

- 3/64" .050" (1.27 mm)
- 1/8" .118" (3 mm)
- 1/4" .236" (6 mm)
- 3/8" .354" (9 mm)
- 1/2" .472" (12 mm)

Panel sizes:

- Standard | 48" x 96" (1219 x 2438 mm)
- Oversize | 48" x 120" (1219 x 3048 mm)

DEFAULT FINISHES

Standard Finishes | Frost/Frost

COMPATIBLE ADD-ONS

- ChemShield
- Marker Board
- Illume
- Opaque
- Luminous
- Reflective Finishes

DESIGN DETAILS

Pattern Repeat

No

Décor Direction

Vertical

OPACITY

Based on approximate amount of light showing through the panel.

